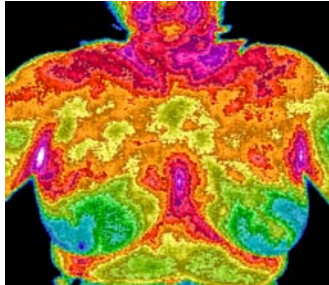
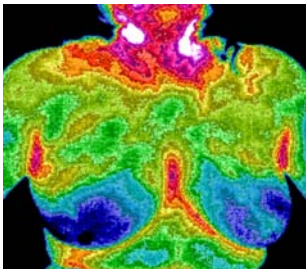


Cyma Technologies instruments are registered with the FDA as Class I devices. Known as electric, acoustic massagers, these products may relieve minor aches and pains.

Success with AMI in 20 minutes

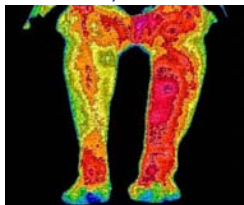


After 20 minutes via feet application

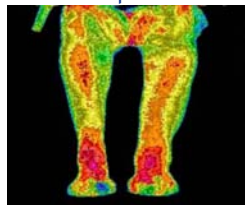


PAD—Peripheral artery disease is a condition of the blood vessels that leads to narrowing and hardening of the arteries ...

Before



After



PAD Study published and presented BEMS 30th Annual Meeting-June 2008

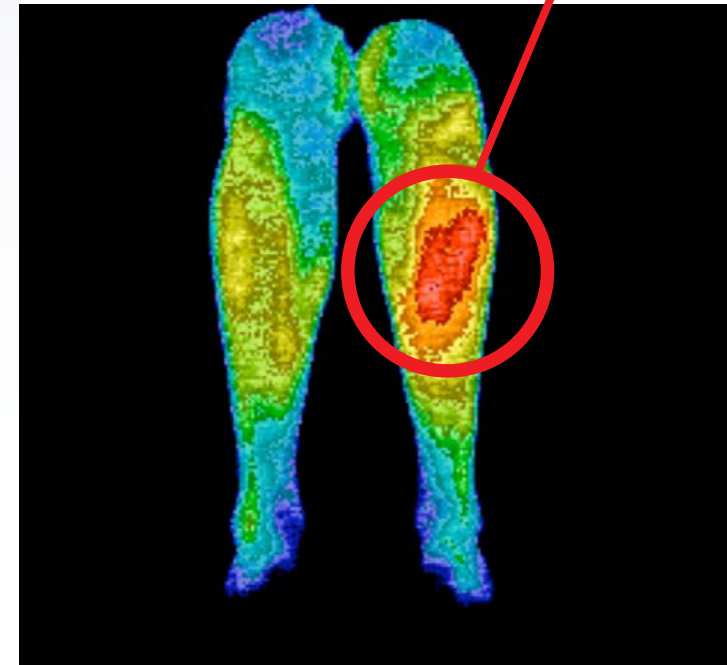
Add the Science of AMI to your life...

AMI—Acoustic Meridian Intelligence is a non-invasive, sound therapy that helps restore the body to optimal health, balance and function. It uses advanced instruments to transmit to the body's organs and tissues the frequencies associated with healthy cells, supporting the body's natural healing abilities.

Today, many scientists have shown that the human body is a dynamic energy system and that our cells, organs and tissues have their own vibratory nature. This natural, or resonant, frequency can become upset or imbalanced, leading to pain, illness or disease. Cyma Technologies instruments are the culmination of over 50 years of research and development. Cyma Technologies has developed unique and internationally patented instruments that deliver precise combinations of frequencies associated with healthy tissue and organ systems. These sound waves help to normalize imbalances and synchronize the cell's frequency back to its natural healthy state of vibrational resonance.

Ask your Licensed Healthcare Practitioner how you can experience AMI—Acoustic Meridian Intelligence, today!

What Makes This



Go Away in 20 minutes?!

Carol Marchione

p: 440.540.4446 c: 440.497.8082

www.FloatingLotusWellness.com

AMI – Acoustic Meridian Intelligence

Advanced Technology in the Science of Sound

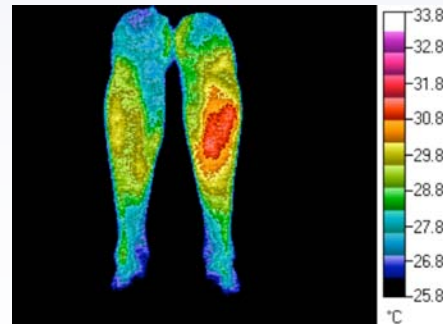
Acoustic Meridian Intelligence

- Applied through the pathways of meridian therapy,
- Based on the audible frequency programs researched by British osteopath, Dr. Peter Guy Manners, and
- Combined with today's internationally patent-pending technology to deliver phenomenal and fast results!

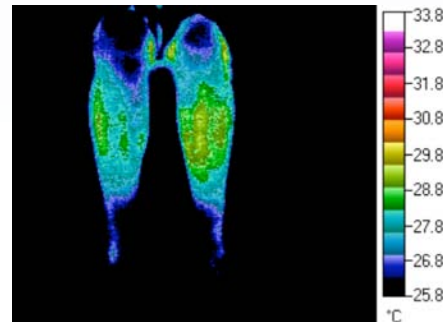


Please note: Cyma Technologies does not make any diagnosis or medical claims. The audible tones emitted by the AMI750 relax and support the body.

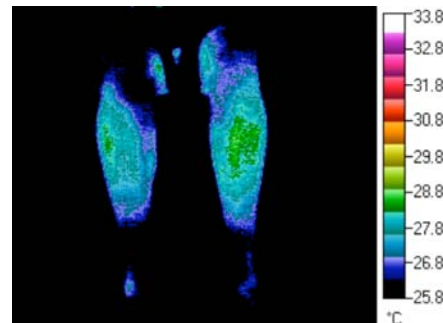
Before



After
20 Minutes



After
25 Hours



Add the Science of AMI to your office...

The **AMI750** is a user-friendly device based on the effectiveness of acoustic sound traveling the energy pathways of the meridian system to relax and support the body's balance.

The AMI750 comes pre-programmed with three protocols approximately 20 minutes in length and is ready for immediate use!

- Channel 1~Stress Reduction
- Channel 2~ Chakra/Endocrine Balance and
- Channel 3~Vitality
- Channels 4-10 are available for 'patient specific' protocols.

Patients can experience sessions with the AMI750 in the office, and purchase or lease the AMI750 for home use; daily application will support care between visits to the doctor.

The AMI750 is easy to use by powering ON and selecting desired Channel. The patient relaxes while their feet rest on the soft gel pads during the 20-45 minute protocols. The AMI750 is portable and weighs just 8 lbs.

Patient specific protocols can be updated on future visits to your Doctor. The AMI750 is effective for 'long distance' patients, as well. After patient consultation, the AMI750 can be programmed 'at a distance' and your care can continue until your next visit to your licensed healthcare practitioner.